

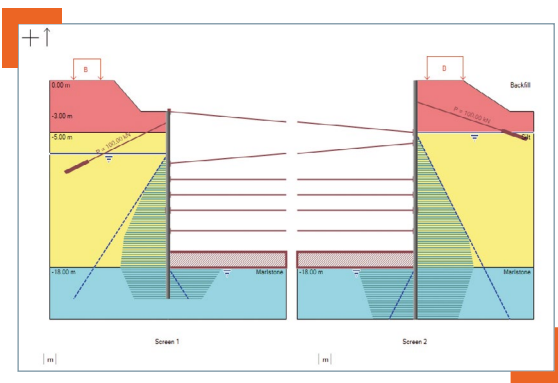
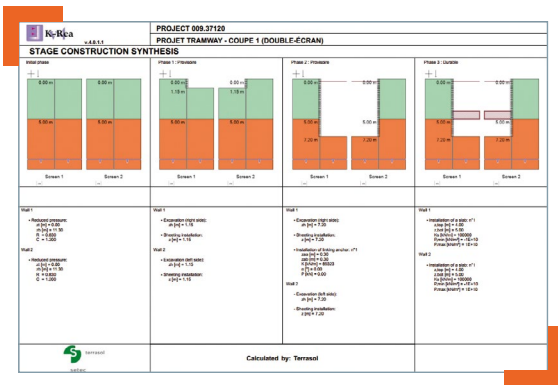


K-Réa v4

DESIGN OF SINGLE/DOUBLE RETAINING WALLS

A user-friendly software

- **Easy browsing** between the different phases.
- **Numerous wizards** for the evaluation of earth pressure coefficients and subgrade reaction coefficients.
- Dialogue boxes with **systematic quotes of the units**.
- Useful **graphical display** of input data and calculated results.

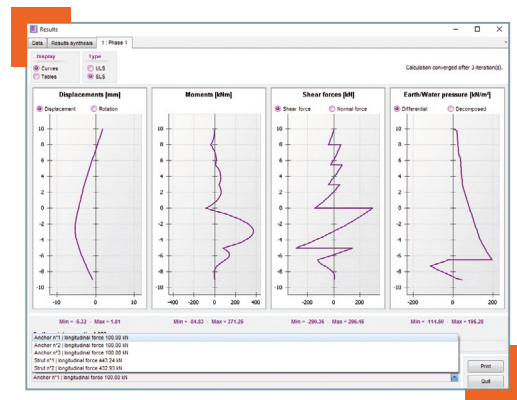


Construction phases

The project phases include the initial phase for the wall installation, plus any number of construction phases. In each phase, one or several actions may be defined, such as: installation of **anchors or struts**, activation of **loads, earthworks** (embankments or berms), change of the **water level**, etc. It's also possible to define load combinations.

Main results (curves and tables)

- Displacements, moments, shear forces, normal forces, arching forces, anchors reactions (for each phase and envelope curves).
- Active and passive earth/water pressures.
- Limiting/mobilized earth pressure ratio.
- Dedicated window for ULS checks results (failure on the passive side, balance of vertical forces, Kranz).



Optional module: double-walls

An option of K-Réa v4 enables you to model **double-walls, or rear-walls**, i.e. to define 2 walls (either identical to each other or not) and have them interact through 1 or several levels of **linking anchors** (punctual or distributed). These linking anchors can take traction and/or compression depending on the input data.



MINIMUM HARDWARE REQUIREMENTS

Compatible computer with:

- Intel® Core Duo CPU
- 4 Gb RAM
- At least 1366x768 resolution
- USB port
- 500 Mb free hard-disk space
- Windows® 8.1 SP1/10, 32 or 64 bits