



A new railway line between London and Birmingham

HS2 project
2017 - 2018

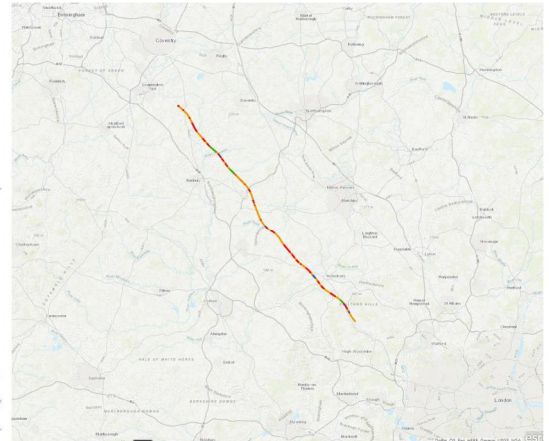
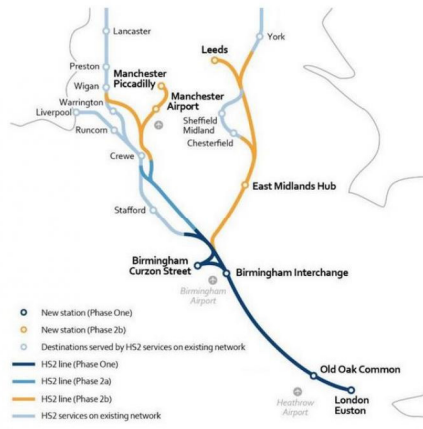


Client
JV EIFFAGE & KIER

Partners
SETEC UK, SETEC TPI,
SETEC ORGANISATION,
SETEC INTERNATIONAL,
SETEC FERROVIAIRE

Joint contractors
Arcadis UK and Cowi

Highlights
17 viaducts
3 cut-and-covers
High embankments and
deep cuttings



The Project

The HS2 project consists in the construction of a high-speed railway line linking London to Birmingham (phase 1) and then to Manchester and Leeds (phase 2) in the North of England.

Phase 1 of the project, which is currently underway, involves a 200-km section between London and Birmingham. It has been divided into 7 work packages that have been allocated to several consortia.

Two of these work packages were awarded to Eiffage-Kier, which entrusted the DJV composed of Setec, Arcadis and Cowi to perform the design of the C2 and C3 central work packages, which cover a distance of 80 km, including 17 viaducts, 3 cut-and-covers, and major earthworks (high embankments up to 14 m high, and cuttings nearly 30 m deep).

Our Services

TERRASOL is part of the SETEC team on the project platform in Birmingham.

This multidisciplinary team is involved in the earthworks studies for both the C2 and C3 work packages: geotechnical studies, drainage, environment, landscaping, BIM, etc.).

Key features

- o Earthworks studies (geotechnical studies, drainage, environment, landscaping, BIM...)