



## Port of Miami – Road Tunnel

Underground structures

2011 - 2012



UNITED STATES -

Miami

Client

BOUYGUES TP

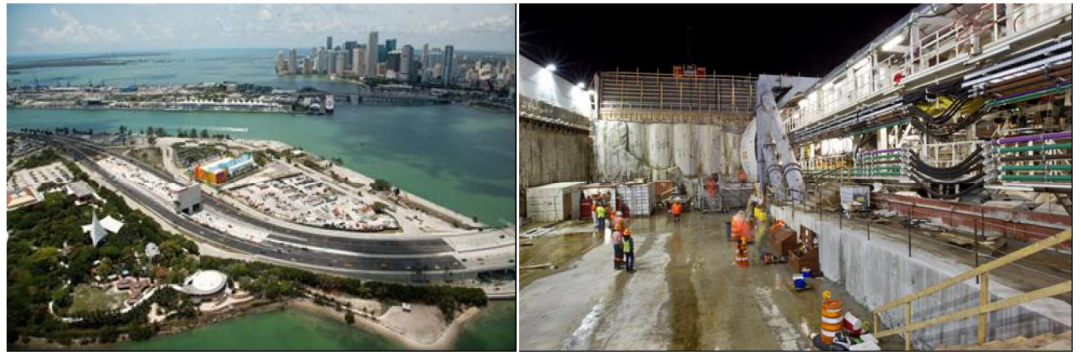
### Project owner

Florida Department of Transportation

### Miscellaneous

Twin tube tunnel of 1200 ml,

Diameter: 12 m



### Description of the project

TERRASOL was called upon by BOUYGUES to help them analyze the geotechnical conditions for the excavation of a tunnel under a sea channel in the Port of Miami.

This 1200 m long and 11 m diameter twin-tube road tunnel passes approximately 15 m below the channel bottom and through extremely heterogeneous corraline ground, including one layer with very poor properties. The tubes have been realized one after another with a slurry shield TBM designed by Herrenknecht.

### Description of the mission

No tunnel of this size had been built in Florida through this kind of geological formation, which is extremely difficult to investigate and test given the high fragility of some layers.

A tough challenge for French (geo)technics ! The tunnel was opened in August 2014 after an intensive campaign of soil treatment in aquatic environment.

### Key features

- Expertise of the excavation conditions

### terrasol

Immeuble central seine  
42 - 52 quai de la rapée  
75583 Paris cedex 12 France  
Tél +33 1 82 51 52 00  
Fax +33 1 82 51 52 99  
info@terrasol.com