



EPR in Flamanville

Retaining structures

2006 - 2007



FRANCE - Manche

Client

DTP TERRASSEMENT

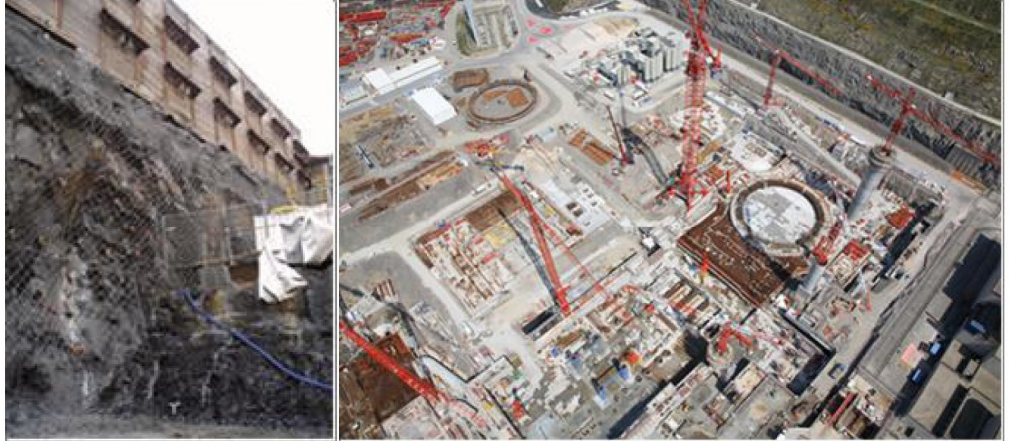
Project owner

EDF

Miscellaneous

40 nailed/bolted rocky slopes,

Anchored soldier-pile walls,
Impermeable grouted slug



Description of the project

In 2006, EDF initiated the construction of the EPR nuclear power plant in Flamanville, France (50). TERRASOL intervened within the framework of a G3 mission on earthworks and retaining structures preparation works. This included more particularly:

- nailed/bolted slopes in a highly fractured, sometimes altered, rocky context;
- sheet-pile gabions;
- anchored soldier-pile walls;
- traditional retaining wall.

Some parts of these structures are located below sea level.

Description of the mission

In terms of geology, the project is located at the periphery of the Flamanville granite batholith and overlaps hornfels, highly metamorphised terrains, characterized by a very high abrasivity.

Geological monitoring during the earthworks enabled to optimize the embankment reinforcements and the drainage systems according to the fracturation observed, but also to adapt the construction techniques.

Some sensitive structures were subjected to reinforced monitoring, with definition of deformation thresholds and interpretation of measurements.

Key features

- Earthworks geological monitoring (G3 mission)
- Reinforcements optimisation

terrasol

Immeuble central seine
42 - 52 quai de la rapée
75583 Paris cedex 12 France
Tél +33 1 82 51 52 00
Fax +33 1 82 51 52 99
info@terrasol.com