

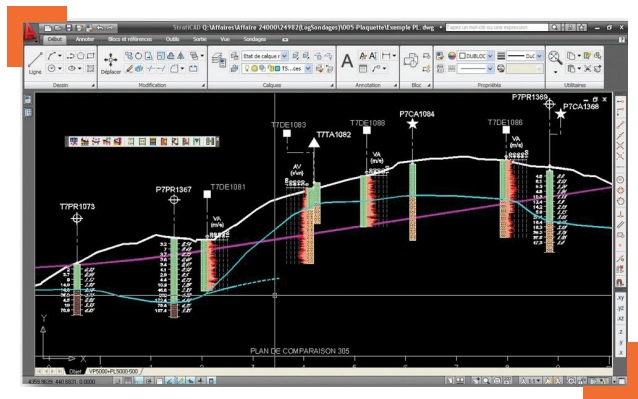



Stromatic

Stromatic is a tool for the efficient **drawing of geotechnical data** within your CAD software. It includes **layout tools** and **borehole log creation tools**, with various possible settings.

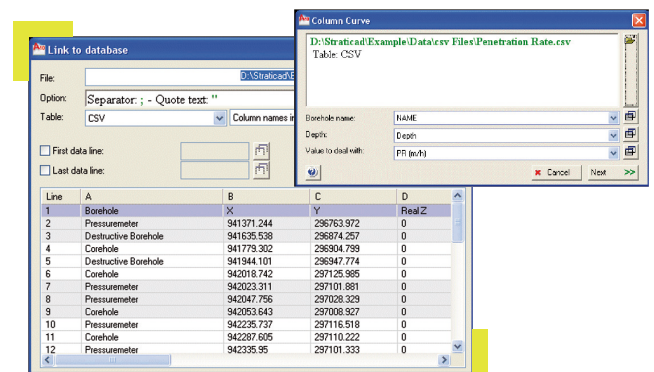
A powerful tool

Stromatic combines **efficiency, simplicity and graphical quality**, providing significant time savings even when dealing with a small number of boreholes, thanks to the **semi-automatic processing of geotechnical data** within drawings.



Loading of databases

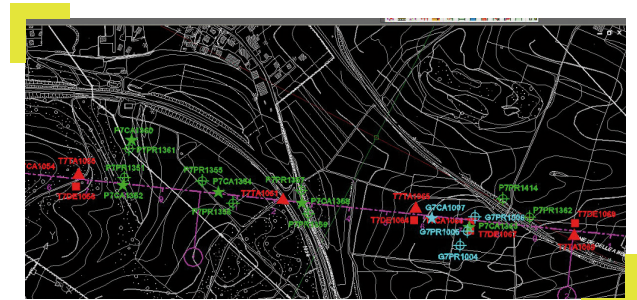
Stromatic can import **boreholes databases** provided as Excel®, Access® and Open Office® spreadsheet files. The link between the database and the CAD software is set and saved within the drawing file.



Line	A	B	C	D
1	Borehole	X	Y	Real Z
2	Pressurometer	941371.244	296763.972	0
3	Destructive Borehole	941635.536	296874.257	0
4	Corehole	941778.302	296904.759	0
5	Destructive Borehole	941944.101	296947.774	0
6	Corehole	942018.742	297125.985	0
7	Pressurometer	942023.311	297101.881	0
8	Pressurometer	942047.756	297028.329	0
9	Corehole	942053.643	297008.927	0
10	Pressurometer	942235.737	297116.518	0
11	Corehole	942287.605	297110.222	0
12	Pressurometer	942335.95	297101.333	0

Cad compatibility

Stromatic integrates with Autocad® and Autocad LT® environments (versions 2000 to 2016), Bricscad®, and ZWCAD®.





Straticad

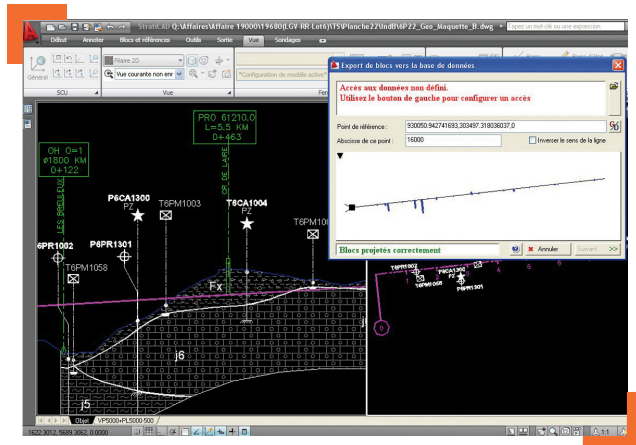
GEOTECHNICS AND CAD

Two groups of tools

Layout tools

These tools enable:

- rapid and accurate layout of borehole symbols on the top view and longitudinal profile.
- calculation and import of boreholes locations on a project axis.
- automatic layout of borehole logs.



MINIMUM HARDWARE REQUIREMENTS

PC-compatible computer with:

- processor compatible Intel® Core Duo
- 2 Gb RAM
- resolution 1280x720 minimum
- USB port
- 500 Mb free hard-disk space
- Windows® 7/8, 32- or 64-bit

Borehole log creation tools

These tools provide numerous options for the clear display of data:

- text and level columns
- hatching columns
- curve columns
- columns associating texts and curves, or hatching and curves
- columns including symbols.

Once preferences have been set, Straticad generates a unique Autocad "block" for all or some of the database boreholes depending on the user's instructions. This "block" may be saved within the CAD drawing or shared on a server. Straticad also allows for automatic printing of borehole logs with different possible formats: vector, picture, or PDF®.

